

# Built for Battle® DV-6

## 6" Vacuum Assisted, Double Diaphragm Pump



The DV-6 now offers Contractors & Rental Companies who prefer using Double Diaphragm Pumps a pump that is more along the lines of TOTAL SITE SOLUTION. It can be used for much deeper & larger Wellpoint Systems as well as multiple Sock Drain Lines, and still be used for all the other METHODS of DEWATERING they could encounter on a jobsite. While only burning 9-10 gallons per day and capable of running over a week continuous. Our whole purpose behind building the DV-6 was to give Contractors & Rental Companies a different way to tackle Multiple Methods of Dewatering on their jobsite with ONE SIMPLE SOLUTION.

### Duty Points

Max Flow: 550 GPM/ 2081 LPM

Max Head: 80 TDH/ 24.38 m

Max Suction Lift: 28' ft/ 8.53 m

Solid Handling: 4"/ 101.6 mm

Max CFM: 120-130 CFM

### Market Segment

Construction:

Site & Underground Utility,

Heavy Road & Civil

Municipal: Wastewater

Industrial

Petrochemical



Components of this product are protected by one or more patents. The protected components and the associated patent(s) are identified at: [www.msp-pumps.com](http://www.msp-pumps.com)

### Standard Features

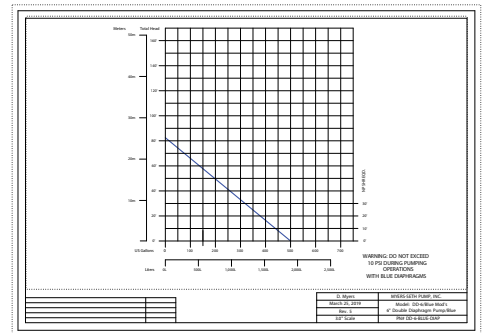
- Sound Attenuated Fully Enclosed
- Camlock or Bauer Hose Fittings
- Lockable Fuel Cap
- Fuel Gauge
- Heavy Duty Lifting Bale
- 5,000 lbs. Front Jackstand
- Powder-Coated Frame
- DOT Trailer Lights
- High Volume Pump

- Highway Fenders
- Heavy Duty Battery and Cables
- Easy Access Cleanouts

### Options

- Skid Mounted
- AUTO Start Control Panel
- GPS Telematics
- Pushrod Protection Cover
- Electric-Driven Pump Packages Available

### Flow Chart



Myers-Seth Pumps  
[goodpeople@msp-pumps.com](mailto:goodpeople@msp-pumps.com)



**HERE FOR YOU**  
**904.389.6114**

**MSP**  
UNCOMPLICATED

# Built for Battle® DV-6

## Specifications

Engine		Frame	
Make/Model	HATZ 1D90E	Frame Construction	10" Square Steel Tubing
Horsepower	9.5 HP @ 1800 rpm	Fuel Capacity	71 gal (246.05 L)
dBA Sound	78 dBA	Lifting Bale	Heavy Duty Single Point
Safety Shutdowns	Low Oil Pressure	Tie Downs	(4) Heavy Duty Tie Down Points
Engine Displacement	40.70 cu (0.667 L)	Height	64" (162.56 cm)
Engine Type	One Cylinder, Air-Cooled, Diesel	Width	74" (187.96 cm)
Daily Fuel Consumption	8-10 gal/day	Length	112" (284.48 cm)
Max Continuous Run Time	213 hours (8.8 days)	Weight	2980 lbs (1352 kg)
Standard Equipment	Instrument Control Panel w/Hour Meter	Wheels & Tires	15" P205/75R15 Radial
		Axle Type	3,500 lbs Torflex

Pump			
Pump Housing	A-36 Steel	Max Operating Temperature	160°F/71.11°C
Pump Capacity Suction	Blue - 550 GPM @ 1800 rpm (2081 LPM)	Flapper Valves	3/8" Weighted, Full-Flow, Reinforced Rubber
Bursting Diaphragm Pressure	80 psi	Max Suction Lift	Blue - 28' ft (8.53 m)
Max Operating Diaphragm Pressure	10 psi	Air Handling	Blue - Max 120-130 CFM
Max Head Pressure	80 TDH (24.38 m)	Suction & Discharge Valve Seats	Stainless Steel, 3/8" Plate
Max Operating Speed	60 rpm (Gearbox) 1800 rpm (Engine)	Solid Handling	Blue - 4" (101.6 mm)
Vacuum Pump	70 CFM, oil less		

**WARNING: Do not exceed 10 psi during pumping operations with Blue Diaphragms**

